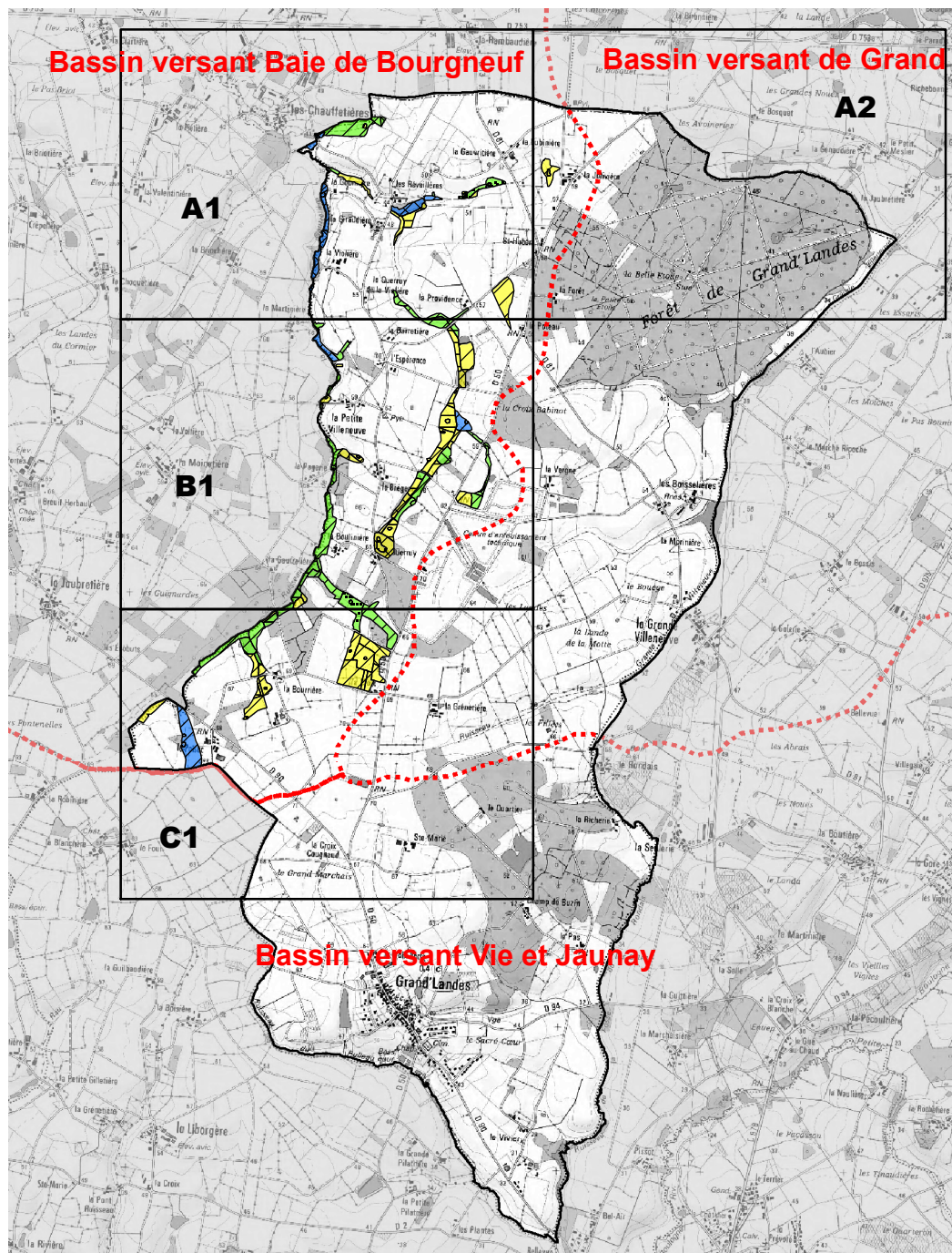



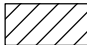


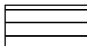
Inventaire des zones humides de Grand'Landes







ATLAS CARTOGRAPHIQUE AU 1: 10 000

LEGENDE:

Typologie CORINE Biotopes:

-  2: Milieux aquatiques non marins (Mares, Plans d'eau)
-  3: Landes, fruticées et prairies (Prairies)
-  4: Forêts (Boisements)
-  5: Tourbières et marais (Jonchaies)
-  8: Terres agricoles et paysages artificiels (Cultures, Peupleraies)

Classement des zones humides:

-  Classe 1 (ZH les moins fonctionnelles et présentant un intérêt biologique moindre)
-  Classe 2
-  Classe 3
-  Classe 4 (ZH les plus fonctionnelles et présentant un intérêt biologique fort)



0 0,5 1 2
Kilomètres

Source: SCAN 25

Réalisation: ADBVBB 2012